



*Where Service & Total Customer Satisfaction Make the Difference!*

# *General Specifications*

*For*

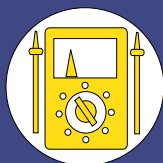
## *Measurement and Analytical Buildings*



Analytical



Measurement



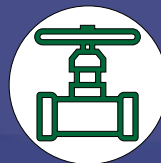
Test Equipment



Power



Wireless



Control



Field Service



Safety



## Standard Building Specifications

### Skid Mounted

- All standard size buildings are fabricated on an aluminum skid equipped with front and rear tow-bars, forklift ports on both sides, and open-cell spray foam insulation beneath the floor.
- Vertical unistrut supports posts are welded around the perimeter of the skid. This approach not only dramatically increases the structural integrity of the building but also creates a flexible, high-capacity equipment mounting environment.



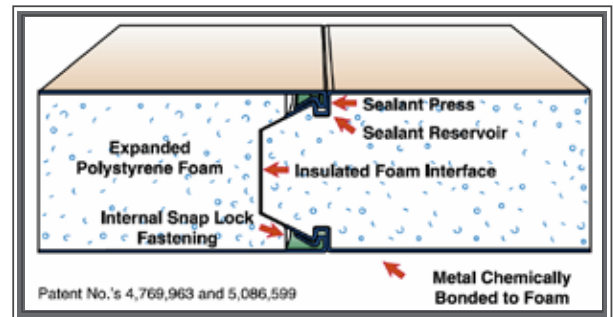
Skid Structure  
AL Floor with AL Unistrut Mounts



High-capacity Equipment Mounting

### Building Construction

- Side walls and the roof are fabricated using 3" Snap-N-Lock™ Tuff-Kote Gold Structural Insulated Panels (SIP) constructed of 3" thick x 1 lb density Expanded Polystyrene core (EPS) sandwiched between two layers of .030" aluminum.
- Tuff-Kote Gold is a dual-layer paint finish with a base color layer, and a clear protective top layer. The top coat is fused to the base coat during the baking cycle. The result is a paint finish that is more resistant to damage than standard paint finishes.
- The building includes a gable roof with a 3 on 12 pitch from front to back and a 3" overhang on all sides.
- Steel door with a 6" frame and panic lever lock.
- Vents with bug screens are included at the apex of both side walls.
- A through-wall air conditioning unit is standard and sized to efficiently cool the interior of the building.
- The SIP panels not only provide structural support but also a R13 equivalent insulation value for all walls and the roof.
- Wall and roof panel are fastened to the internal skid structure, extruded aluminum corner post and unistrut post, further enhancing the building structure
- By using interlocking SIP walls and roof, the building is insect and rodent resistant.
- Routine maintenance is minimized. SIP panels with Tuff-Kote Gold coating requires no painting, will not corrode, and can be easily cleaned using a mild detergent or pressure washer.
- An all aluminum building is much lighter weight than steel - which is 2.5 times denser than aluminum. A lighter weight building significantly lowers transportation cost, provides for much easier loading/unloading process, and a less complicated installation process.



SIP Joint Detail



Standard Panel Color





## Structural Insulated Panel Approvals

### Florida Product Approved

APPROVAL #'S: FL-15491

### Florida HVHZ Approved

APPROVAL #'S: FL-15491

### California FBH Approved

APPROVAL #: QC-1

### Texas Department of Insurance Approved

APPROVAL #: RC-247

### International Code Council - ICC

THE SNAP-N-LOCK™ PANEL IS RECOGNIZED BY ICC-ES # ESR- 2488 AND # ESR-3152

### ENERGY STAR® Certified

.024 & .030 ALUMINUM SNAP-N-LOCK™ COMPOSITE ROOF PANELS WITH WHITE TUFF-KOTE GOLD DUAL LAYER PAINT FINISH MEET OR EXCEED THE REQUIREMENTS SET FORTH BY ENERGY STAR®.

### Aluminum Association of Florida

THE FLORIDA BUILDING COMMISSION HAS FORMALLY ADOPTED THE AAF GUIDE BOOK INTO THE FLORIDA BUILDING CODE.

## 120 VAC Electrical Infrastructure

- The building electrical infrastructure is generally based on the installed equipment package - which ultimately defines the electrical classification requirements of the structure to include classified Class 1 Division 2, Class 1 Division 1 or non-classified. Standard Gulf Coast buildings include a non-classified electrical infrastructure. See Optional Configurations for alternatives.
- Typical 120v electrical packages include a fused main exterior disconnect, grounding, load center with main breaker and branch circuit breakers, receptacles for equipment and convenience, overhead interior LED lighting, and exterior lighting with a photo sensor.
- To accommodate external cabling or tubing entering the building, an 8" x 8" x 4' exterior wire-way is connected to a 6" x 6" x 4' interior wire-way with (4) 2" conduit nipples.



### Load Center

- The standard building design includes a NEMA 1, 100 amp 120/240 VAC load center with (24) available circuit positions and includes a main breaker, solid copper ground buss, (12) 20 amp commercial single-pole breakers, and (1) 20 amp commercial single-pole GFCI breaker.



### Ground Buss

- (7) position Isolated, copper ground buss

### Lighting

- Standard 6' x 6' buildings include (1) 2-1/2" X 48" 24 watt, 2900 lumen LED fixture. Standard 8' x 8' buildings include (3) 24 watt LED fixtures.
- All buildings include (1) 100-watt, 11,500 lumen exterior flood light with photo-sensor.



### Branch Circuits

- (8) duplex 120 VAC, 20A commercial receptacles mounted in (4) double duplex surface-mounted boxes.
- 20 amp VDC power system circuit.
- 12 awg stranded THHN wiring for all circuits.
- Single-pole, single-throw (SPST) light switch near the door.
- Galvanized EMT conduit throughout for lighting and branch circuit wiring.





# Measurement and Analytical Building Line Sheet

Contact Us:

(225) 683-6636

sales@gulfcoasttmc.com

Where Service & Total Customer Satisfaction Make the Difference!

## 24 VDC Infrastructure

- Standard buildings include a 20 amp Phoenix Contact Power Supply, UPS system with (2) 100 aH backup batteries (100 aH 24 VDC) and surge protection.
- Push to reset breakers - (1) 20 amp for battery protection and (6) Push to reset RTU circuits: (1) 15 amp, (1) 5 amp, and (4) 2 amp.
- A life time warranty is available on the Phoenix Contact Power Supply and UPS



Phoenix Contact Power Supply and UPS

## Engineering

- For Standard Buildings, engineering drawings will be available with a wind load rating of **150 mph**. Custom size buildings may require an engineering review if a wind load rating is a requirement.

## Submittal

- Upon project completion, Gulf Coast TMC will submit as-built layout drawings, plan view elevation and section drawings, electrical drawings, panel schedule, BOM for furnished materials and QA/QC documents.



Thermo Scientific Auto Pilot Pro Flow Computer integration

## Optional Configurations

- Galvanized steel skid with lifting eyes
- Diamond plate aluminum floor
- Transformer
- Bard HVAC
- Larger Load Center with additional branch circuits
- Classified electrical infrastructure - C1D2, C1D1
- A+ DaVincini Analyzer Distribution Panel
- Aluminum conduit
- Upgraded 24 VDC distribution
- Work Bench
- GC, Flow Computer, Analyzers

## "Custom is our Standard!"

Don't see what you are looking for - give us a call at (225) 683-6636 or send an email to [sales@gulfcoasttmc.com](mailto:sales@gulfcoasttmc.com) to learn how Gulf Coast TMC can help.



Abundant Equipment Mounting Points



6' x 6' and 8' x 10' buildings



6' X 6' Flow Computer Buildings

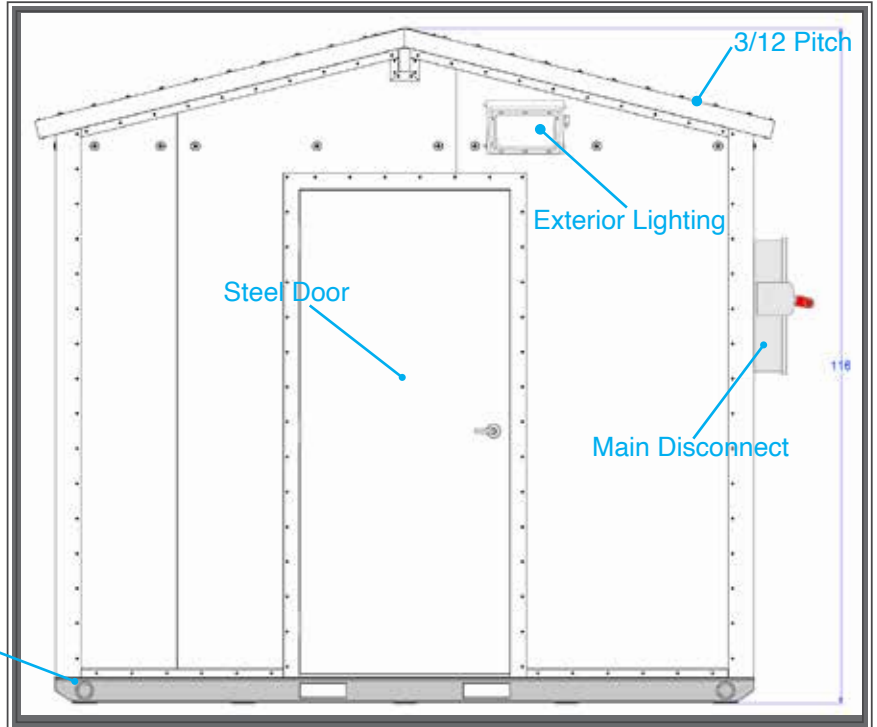


Heat-Shrink Wrap for Shipping



## 8' x 10' Standard Building Layout

(71.25 sq ft Interior)



Front Elevation

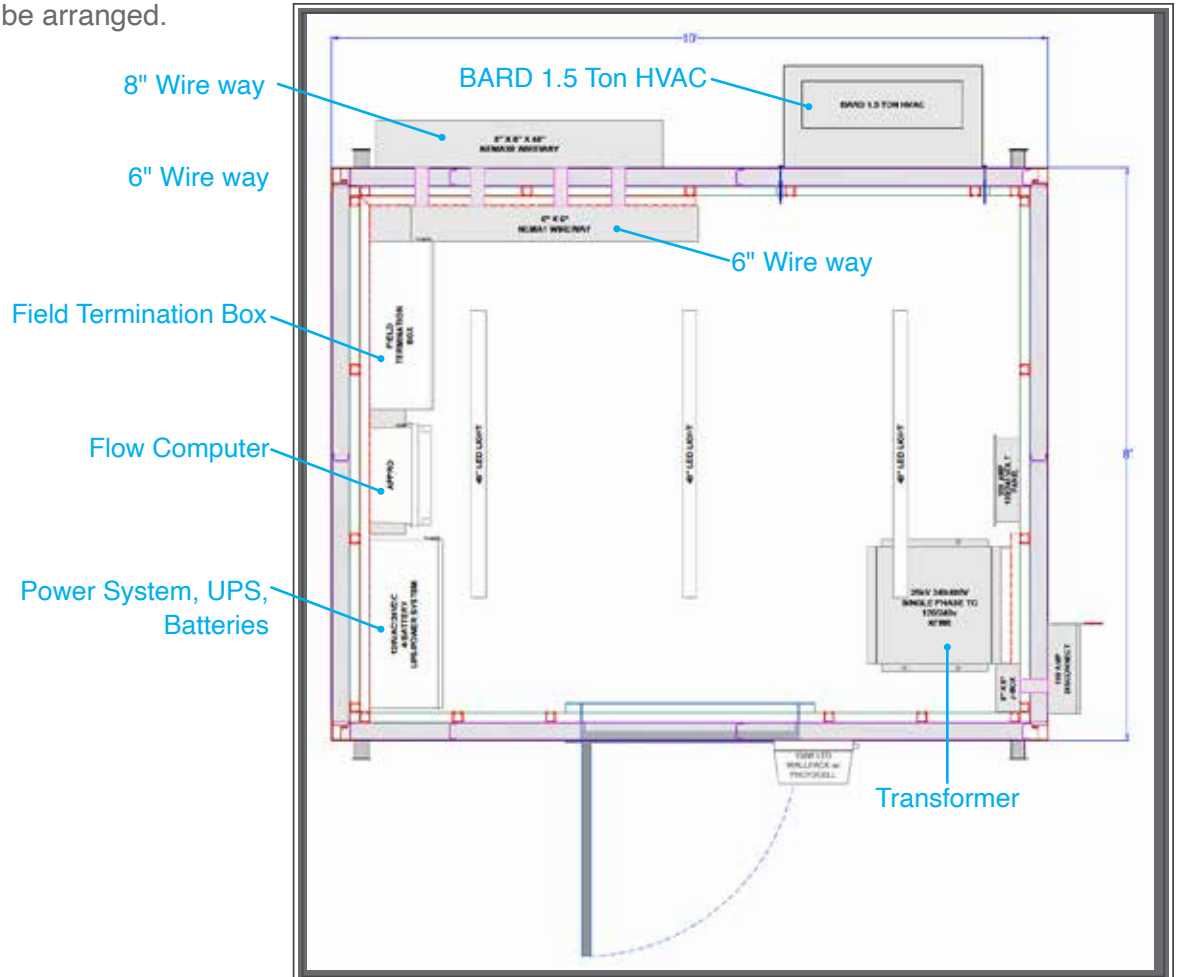
**GULF COAST TMC**  
8' X 10' GENERAL MEASUREMENT BUILDING  
70 SQUARE FEET INTERIOR  
150 M.P.H. WIND LOAD RATING

DRAWING #	DRAWING TITLE
EX10-GMB-01	INDEX SHEET
EX10-GMB-02	ELEVATION
EX10-GMB-03	SKIDANCHORING DETAIL
EX10-GMB-04	FRAME DETAILS
EX10-GMB-05	CORNER ASSEMBLY
EX10-GMB-06	ROOF SECTION DETAIL #1
EX10-GMB-07	ROOF SECTION DETAIL #2
EX10-GMB-08	ROOF SECTION DETAIL #3
EX10-GMB-09	SHEARWALL FASTENING SCHEDULE
EX10-GMB-10	FRONT/REAR WALL PANEL CUT-OUT
EX10-GMB-11	SIDE WALL/ROOF PANEL CUT-OUT

Our standard 8' x 10' building is engineered to withstand **150 mph wind loads**.

Aluminum Skid

The Plan View to the right represents a standard 8' x 10' building with examples of how equipment could be arranged.



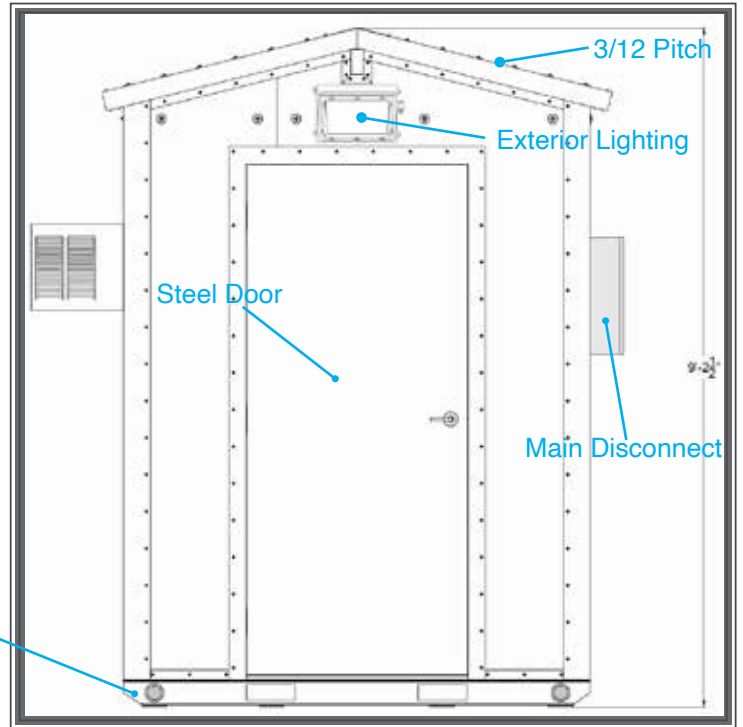
Plan View



## 6' x 6' Standard Building Layout

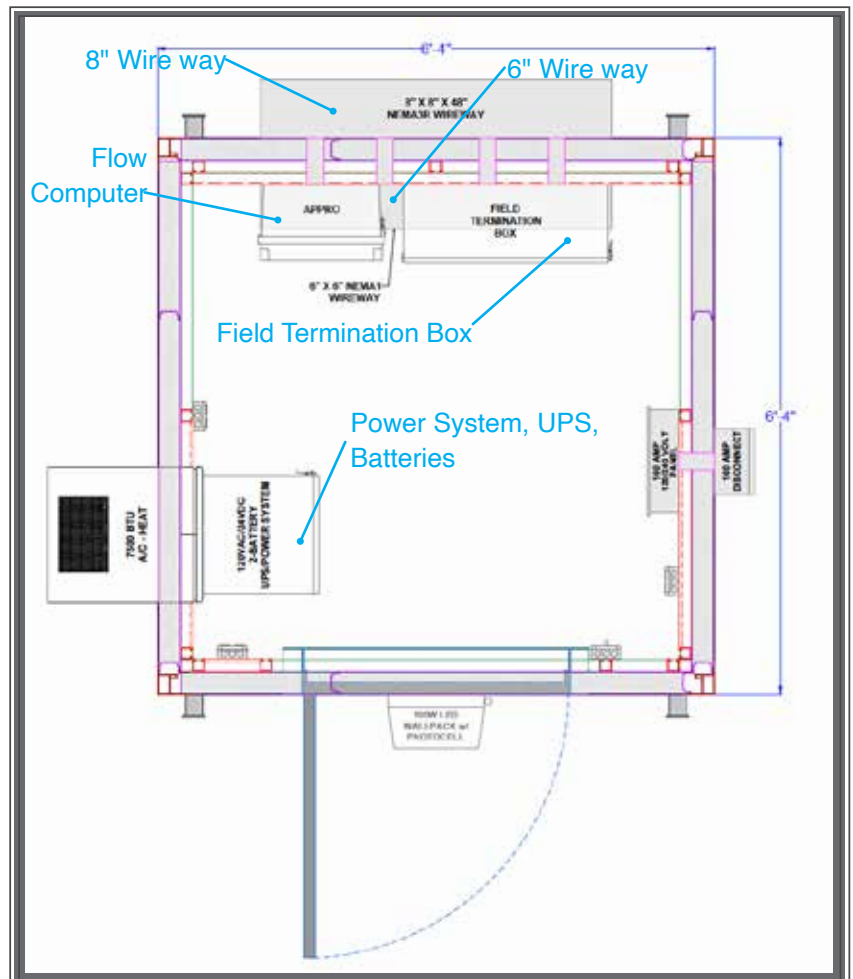
6'-4" x 6'-4" exterior dimensions

(37 sq ft Interior)



Front Elevation

The Plan View to the right represents a standard 6' x 6" building with examples of how equipment could be arranged.

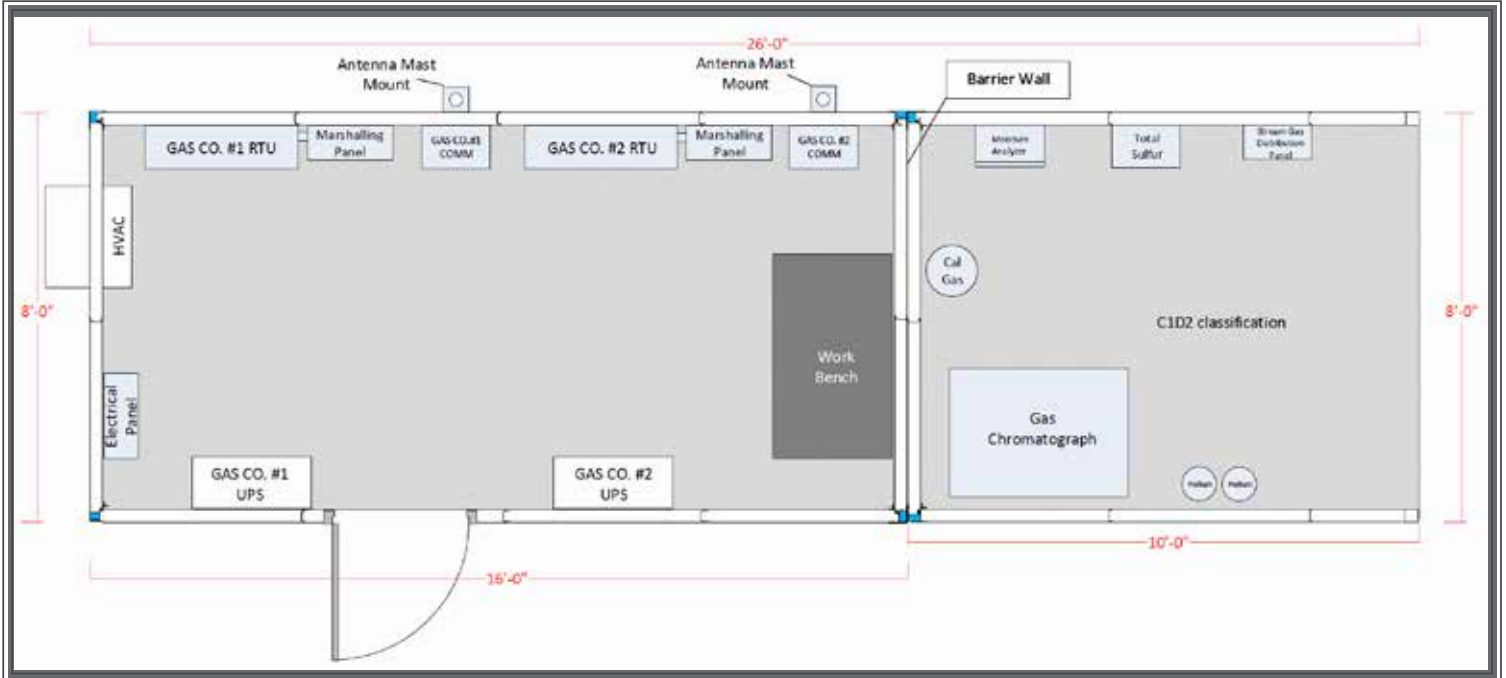


Plan View



## Custom Configuration Example

Every building we build involves some degree of customization to satisfy our Customers' project requirements. We are a service based business and focused on helping our Customers create unique, highly functional solutions to complex business challenges. Following is an example of a recently installed 26' x 8' skid-mounted building which included classified / non-classified work areas. All of the equipment, wiring, and tubing was pre-installed and tested at our Ethel, LA facility and included a GC, moisture analyzer, total sulfur analyzer, heated stream gas distribution panel, (2) Marshalling enclosures, (2) 24 VDC UPS power systems, (2) RTUs, and (2) communication systems.



Plan View of a Custom Building





# Measurement and Analytical Building Line Sheet

Contact Us:  
(225) 683-6636  
sales@gulfcoasttmc.com

Where Service & Total Customer Satisfaction Make the Difference!



Custom Building Post Install



GC, Moisture Analyzer, Total Sulfur Analyzer,  
and Marshalling Panel.







# Products and Services Line Sheet

Contact Us:  
(225) 683-6636  
sales@gulfcoasttmc.com

Where Service & Total Customer Satisfaction Make the Difference!

## MEASUREMENT

**Thermo**  
SCIENTIFIC

**SICK** **WIKAI**



**CANADA PIPELINE ACCESSORIES**

**Ultra ELECTRONICS**

## ANALYTICAL

**SpectraSensors**  
An Endress+Hauser Company<sup>1)</sup>

**A+**  
A+ Corporation<sup>1)</sup>



**Mustang Sampling**<sup>2)</sup>  
Analytically Accurate

**ABB**

**RAE SYSTEMS**

**UNI PHOS**

**ADVANCED**  
Specialty Gas Equipment

## TEST EQUIPMENT

**MARTEL**  
ELECTRONICS

**Ralston Instruments**  
Pressure Calibration Specialists

**ProComSol**  
Process Communications Station

**Crystal pressure**



**UTILITRAY**  
Process Communications

## POWER

**AMERESCO SOLAR**  
Green • Clean • Sustainable



**bp solar**

**samlexamerica**

**IOTA ENGINEERING**

**PHENIX CONTACT**

## SAFETY

**RK**  
INSTRUMENTS

**PRAGMATICS...**  
DETECTORS

## SYSTEMS

## WIRELESS

**OleumTech**

**FREEWAVE SENA**

**BlueRS232**  
Cable Replacement Solutions

## CONTROL

**VRG CONTROLS**<sup>4)</sup>

**SPOC**  
AUTOMATION

## SERVICES

Analytical, Communications, and Measurement field services including startups, commissioning, F.A.T.s, and verifications. NIST traceable calibration and certification of test and measurement equipment.

- ① LA, MS, AL, TN Markets Only
- ② LA, MS, AL Markets Only
- ③ LA, MS, AL, AR Markets Only
- ④ LA, MS, AL, AR, TN, TX, GA Markets Only
- ⑤ LA, MS Markets Only

Gulf Coast TMC manufactures a complete line of Power, Communication, and Measurement Systems in our Ethel, LA facility. From simple RTU power to complex skid-mounted Measurement and Safety systems we have a solution to fit your needs. Leading Exploration, Production, and Transmission companies from around the United States rely on Gulf Coast's competitively priced, quick-turn manufacturing to satisfy their strict project requirements.



## LOCATIONS

